

fall 2025

ECHOES

UNDER THE RIMS

CURRENTS



St. John's United



CHEIF EXECUTIVE OFFICER

David Trost

**ST. JOHN'S UNITED
BOARD OF DIRECTORS**

CHAIR

Mina Morse

VICE CHAIR

Mike Nelson

SECRETARY

Kristi Fischer

TREASURER

Bill Davies

Paul Adam

Tyler Amundson

Pastor Ken Carrothers

Amy Iverson

Todd Koepp

Margaret MacDonald

Paul Nuetgens

Eric Nord

Pastor Jen Quanbeck

FOUNDATION PRESIDENT

Peter Christ

**ST. JOHN'S
FOUNDATION BOARD**

CHAIR

Katie Edwards

VICE CHAIR

Darrell Ehrlick

SECRETARY

Amanda Boerboom

TREASURER

Sara Sanderson

Tari Broderick

Jock Michelotti

Pam Meier

Mina Morse

Dr. Carol Penn

David Trost

TABLE OF CONTENTS

page 3

MISSION

Navigation

page 9

LEGACY

*The Sylvia Gollick Garden of
Hope and Healing*

page 13

WELLNESS

The Art of Aging Gracefully

page 7

APPRECIATION

Summer Concert Series

page 11

FAMILY

Hard Times. Good Place.

page 15

VOLUNTEER

The Heart You Bring

ABIDING & ADAPTING

Moving with Meaning



THIS FALL 2025 EDITION OF *Echoes*, my first as the newly installed St. John's Foundation President, has taken the theme, **Currents**. With it, I invite us to reflect on the forces that shape our lives, our communities, and our shared mission. Currents can be turbulent or gentle, predictable or wild. They can carry us forward or challenge us to steer with intention. At St. John's United, we are learning to move with these currents—not against them—with courage, compassion, and creativity.

Our feature article, *Navigation*, sets the tone by naming the challenges facing aging services today—from demographic shifts and financial pressures to workforce shortages. But it also highlights the bold initiatives now underway at St. John's United that lean into these challenges and transform them into opportunities for deeper impact.

In *The Art of Aging Gracefully*, Dr. Carol Penn leads us through a celebration of vitality, wisdom, and movement. Her workshop reminds us that aging is not a decline—it's an evolution. Through breath, connection, and creativity, we discover that the current of life continues to flow with purpose and joy.

We honor legacy and healing with our newly planned *Garden of Hope & Healing*, a tribute to Sylvia Gollick, whose decades of service shaped the heart of our community. Our recent event, *Petals for Purpose*, raised the funds needed to create this garden courtyard beside our Outpatient Therapy Clinic. It will be a living space for reflection and renewal—a place where memory and mission meet.

In *Hard Times. Good Place.*, we witness the transformative journey of Danny Peterson, whose life blossomed in the embrace of Chapel Court. What began as a family crisis became a story of belonging, growth, and unexpected joy. Already one of my favorite residents, Danny's presence reminds us that every person carries a current of possibility waiting to be nurtured.

The Heart You Bring introduces us to Sterling Trenary and Wes Windon, hospice volunteers whose quiet presence brings dignity and connection to those nearing life's end. Their stories reveal that the

most powerful currents are often the gentlest—those of listening, touch, and simply being there.

Finally, our photo essay captures the spirit of summer through the lens of our concert series. These images showcase the joy, laughter, and togetherness that define our community. In a world of uncertainty, these moments remind us of what truly sustains us: music, movement, and shared celebration.

As you read through this edition, we invite you to consider the currents in your own life. What forces are shaping your journey? Where do you find hope, healing, and connection?

A handwritten signature in black ink that reads "Peter".

Peter Christ
President
St. John's Foundation

CONTENT EDITOR
Peter Christ

**LAYOUT, DESIGN
& PHOTOGRAPHY**
Julie Schneider
Mara Willett

CONTRIBUTORS
Peter Christ
Dr. Carol Penn
Rachel Simonson
Carissa Welsh



NAVIGATION

UNPREDICTABLE WATERS: THE SAFETY-seeker says, “Why in the world would anyone get on that boat?” The thrill seeker says, “If I’m not wet, what’s the point?” Both are valid perspectives on the same situation.

In the whitewater rafting classic *The River Wild*, a skilled river guide uses her knowledge of the rapids and resilience to navigate rugged, treacherous waters while being held hostage. She and her family use strategy, teamwork, adaptability, and the river itself to outsmart the criminals. The family survives.

Navigating the ever-changing waters of healthcare for older adults is the task St. John’s United leaders

have chosen—or been confronted with. Previous issues of Echoes have explored stories outlining the changing nature of services for older adults, minding the gap, and the coming storm within themes of Adaptation, Perspective, and Progress. Where does St. John’s stand today—what obstacles and challenges still exist and how is leadership meeting the moment?

Naming the Obstacles

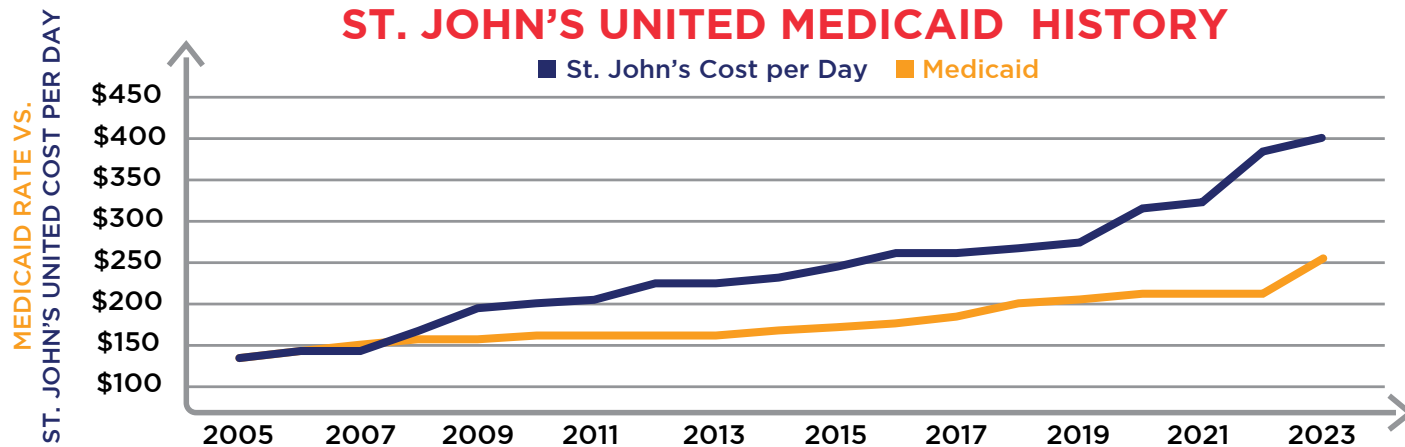
The COVID-19 pandemic became a convenient scapegoat for exacerbating staffing challenges, a decline in funding sources, and increasing expenses, but the reality is that the same factors were in play prior to 2020. The so-called

Age Wave, lower tax revenues, and inflationary environments in healthcare have all conspired to create a perfect storm.

The Age Wave is the back end of the Baby Boom. When Boomers started turning 65 in droves fifteen years ago, they joined the ranks of the previous generation who are living far longer than expected thanks to advances in healthcare. It should be no surprise that we have a problem—industries that serve older adults are now serving two generations. There just aren’t enough people in the younger demographics in the workforce, especially in service-related jobs.



ST. JOHN'S UNITED MEDICAID HISTORY



The financial landscape isn't much better. While the notion of lowered taxes for individuals and corporations is intoxicating, it has consequences. Taxpayers are currently enjoying the benefits of a generation's worth of tax cuts and organizations like St. John's are in jeopardy. Plainly spoken, St. John's cost to care for the frailest older adults who have few financial resources or have exhausted their financial resources far exceeds reimbursements from programs like Medicaid. What about

Medicare? Medicare has never covered the full cost of long-term care in a skilled nursing facility.

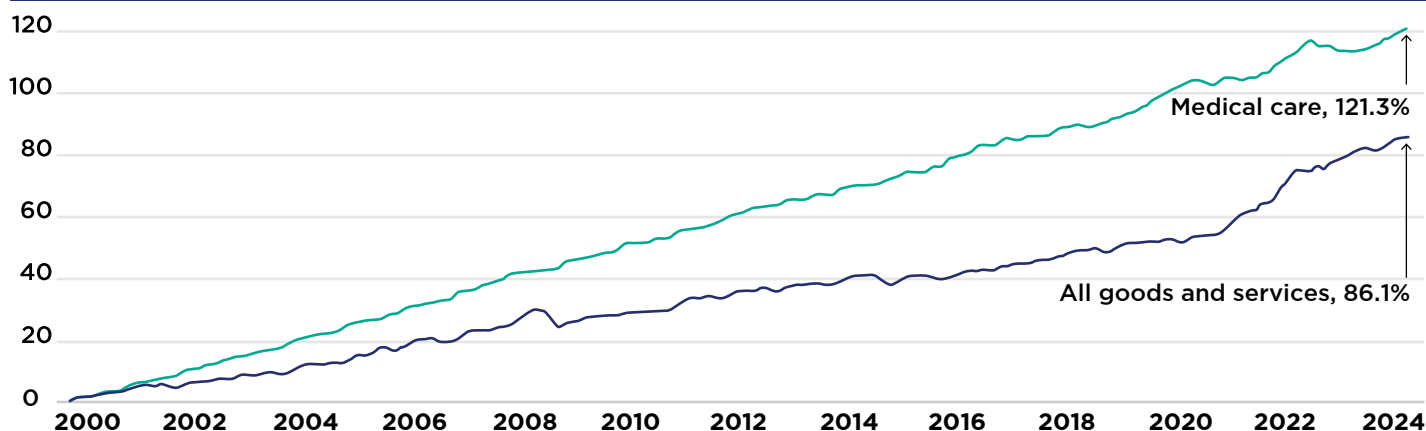
Lastly, while we would like to believe that inflation and its effects are a recent phenomenon, the costs of medical care, including equipment and pharmaceuticals, has surpassed general inflation every year since 2001 according to Peterson-KFF (formerly the Kaiser Family Foundation), a primary resource for healthcare data and metrics. When factored

along with the cost of nursing home regulations for patient safety and well-being, the ability to hold costs level is almost nonexistent.

The cumulative effect of increasing numbers of older adults, fewer available caregivers, the wage demands of those caregivers to meet their own cost of living, and the general cost of care should give one pause. If this were a movie, the passengers on the watercraft would begin wondering if they are doomed.

(continued)

MEDICAL COST INFLATION



Note: Data are not seasonally adjusted. Medical care includes medical services as well as commodities such as equipment and drugs.

Source: KFF analysis of Bureau of Labor Statistics (BLS) Consumer Price Index (CPI) data • Get the data • PNG

Facing the rapids, the wise captain says, “Stay calm.”

The power is in our response to the challenges.

Charting a Course Forward

St. John’s United is not merely weathering the storm—the storm’s energy is being harnessed to propel the organization forward. The challenges of workforce shortages, financial strain, and rising care demands have become catalysts for innovation, collaboration, and renewed mission alignment. Several initiatives now underway that reflect our commitment to respond rather than react:

Workforce Resilience and Career Pathways

To address the critical shortage of caregivers and service professionals, St. John’s has been investing in workforce development through strategic partnerships with high schools and colleges, apprenticeship programs, and internal leadership pipelines. These efforts are designed to attract, retain, and elevate individuals who feel called to serve, offering meaningful career paths in an ever-expanding work environment.

Community-Based Solutions

Recognizing that many older adults prefer to age in place, St. John’s is expanding community-based services—including home health, volunteer networks,

and neighborhood wellness programs. These models reduce institutional reliance and empower individuals to remain connected and supported within their own homes.

On the West End Campus, Respite Suites has recently been opened to offer support to caregivers. Additionally, the Outpatient Therapy clinic has been opened specializing in rehabilitation and healing therapies that equip patients recovering from illness or injury to navigate their surroundings more safely and effectively.

Financial Sustainability Through Innovation

In response to the widening gap between care costs and reimbursements, management and leadership are exploring new funding models and enhancing philanthropic partnerships between stakeholders, donors, and grantors. These approaches aim to stabilize our financial foundation while preserving access for those most in need.

Financial Sustainability Through Growth

As of this writing, one-half of the apartments to be included in the new Aeries project have been reserved and construction is likely to begin in the new year. These residents will be contributing to the vibrancy of campus life while strengthening the financial underpinnings of

the continuum of care available at St. John’s.

Similarly, the WyndStone campus in the Billings Heights will soon see the ground broken on four clusters of patio homes designed in a unique pattern that fosters community.

Lastly, expansion of the skilled care, assisted living, and memory care cottages on St. John’s West End campus is in development. The addition of four resident rooms to each cottage allows for greater attention to private pay and subsidized payor ratios.

Technology-Enhanced Care and Connection

Opportunity exists to explore smart technologies across our campuses and services—from remote monitoring and telehealth to digital engagement platforms. These tools could extend St. John’s reach, improve safety, and foster connection, especially for those facing mobility or cognitive challenges.

Mission-Driven Leadership and Spiritual Grounding


In times of uncertainty, clarity of purpose is essential. We are deepening our investment in mission formation, spiritual care, and values-based leadership development. These efforts ensure that our response to external pressures remains rooted in compassion, dignity, and service.

Anchored in Purpose, Moving with Intention

The waters ahead remain unpredictable, but St. John's United is not adrift. Like the guide in *The River Wild*, we are choosing to respond, not react. We are charting

our course with clarity, courage, and conviction as we remain anchored in our mission to provide living opportunities within nurturing environments of hope, dignity, and love. The challenges are real, but so are the opportunities to reimagine care, deepen community, and lead

with purpose and compassion.

In these turbulent times, our response is our power. And our power lies in people—those we serve, those who serve, and those who believe in the transformative work of St. John's United. 



AERIES: ELEVATED LIVING

THOUGHTFULLY DESIGNED AROUND YOU

EXCITEMENT IS GROWING ABOUT AERIES, AND the response has been incredible - over 53% of residences are already reserved. We're now in the public phase, and we'd love for you to be part of it.

Aeries is more than just a place to live—it's a place to thrive. Backed by the trusted legacy of St. John's United, Aeries offers an upscale lifestyle built around panoramic views, wellness-centered design, pet-friendly living, and a park-like campus that encourages connection across generations. Elevated living means more than luxury—it means peace of mind with a plan for future healthcare and a commitment to serve you.

Ways to learn more about Aeries:

- 🕒 Visit Aeries.org to see pictures & FAQ's
- 🕒 Attend a general information session (Schedule posted on Aeries.org)
- 🕒 Schedule your personal appointment at 406-655-5400
 - Get detailed pricing, floorplans, & availability

This is also a great time to learn about **Charter Member Benefits**, which offer added value for those who choose to reserve early. These benefits are designed to recognize and thank those who are helping shape the future of Aeries.

If you belong to a group or organization that would like to learn more about **What's New at St. John's United** and **Aeries**, we are happy to schedule a group presentation.



SUMMER CONCERT

SERIES 2025

St. John's United

A decorative graphic featuring a stylized piano keyboard with green keys and white outlines. Musical notes are scattered around the keyboard. The text 'SUMMER CONCERT' is written in large white letters on a green background, with 'SERIES 2025' and 'St. John's United' below it.

Thank you sponsors
for making the
Summer Concert Series
a Billings tradition!

TITLE SPONSORS



create **impact.**



**WESTERN
SECURITY
BANK**



LEADERSHIP SPONSORS



**Intermountain
Health**

**St. Vincent
Foundation**



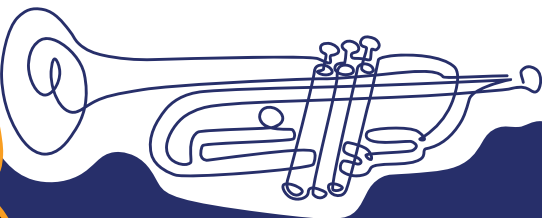
COMMUNITY SPONSORS



SUPPORTING SPONSORS



Bill and Anne Cole





The Sylvia Gollick Garden of Hope & Healing

NESTLED BESIDE THE NEWLY completed Outpatient Therapy Clinic, a once-overlooked courtyard is being transformed into a vibrant and therapeutic space now known as the Sylvia Gollick Garden of Hope & Healing. This renovation not only completes the final section of our legacy building remodel but also honors the life and legacy of one of St. John's United's most beloved leaders—Sylvia Gollick, former Director of Nursing.


Sylvia served St. John's with unwavering dedication, compassion, and grace for 35 years. Her influence shaped generations of caregivers and touched countless lives. Following Sylvia's death in early 2025 her

family reached out to explore the possibility of a memorial on campus. They expressed a deep desire to honor Sylvia's love for the people who serve and are served by St. John's. Their heartfelt request aligned beautifully with plans to revitalize the courtyard adjacent to the new clinic, a space Sylvia herself had walked countless times during her decades of service.

David Trost, CEO of St. John's United, shared a special connection with Sylvia. "From my very first day at St. John's as nursing home administrator in 1995, Sylvia was a guiding light," David recalls. "Her commitment to our mission and her fierce advocacy for both residents and staff shaped the culture we

continue to build on today. Naming this garden in her honor is a tribute to the healing presence she brought to our community."

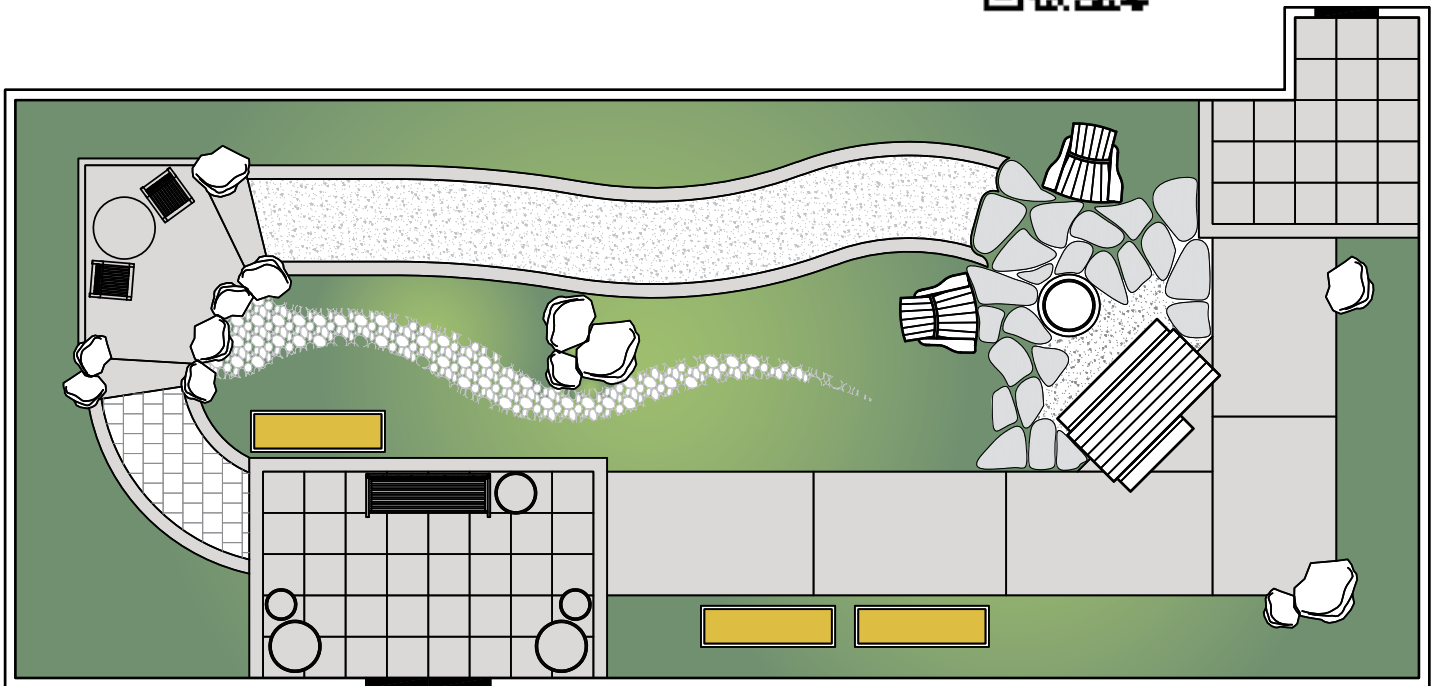
The Garden of Hope & Healing is more than a physical space—it is a living tribute to Sylvia's spirit. With native plantings, peaceful seating areas, and gentle pathways, it invites reflection, renewal, and connection. It stands as a testament to the enduring impact of a leader who believed deeply in the power of care, community, and compassion.

As we walk this garden, we remember Sylvia—not just for her years of service, but for the hope and healing she inspired in all of us. 



Scan the QR Code for a Sneak Peek

Renderings provided by Bearthooth Deisgn Co.





HARD TIMES. GOOD PLACE.



A DOOR OPENED. DANNY EMERGED.

Facing a family crisis in September 2016 following the unexpected death of their oldest sibling and family caretaker, the Peterson family contacted St. John's United. Long retired, it made sense for Alice and Frank to make a comfortable home for themselves at St. John's. Their son Danny, however, was not yet 62 years old; St. John's administrators would need to make an exception to grant him residency. Complicating the challenge of finding the right environment for Danny was that Danny lived with developmental disabilities, dependent on his nurturing, loving, and protective family for daily support.

Within a month Frank and Alice, along with Danny, moved into Chapel Court. That an apartment was available for Frank and Alice was not unusual; that side-by-side apartments were available was "almost a God thing," according to Danny's sisters Sue Schelle and Sharon Wooten.

Danny was initially reluctant to venture out on his own at Chapel Court. Shy and introverted, he kept his interactions with others minimal—rarely speaking or initiating conversation, even with close family members.

As explained by Sharon, Frank and Alice were committed to raising Danny with Opportunities to engage with others. They ensured that Danny was integrated within the Billings education system and encouraged his participation in a community bowling league. Danny was among the first participants

in a McDonald's pilot program for people with disabilities, which led to 35 years of employment. To get to work, Danny navigated the public transportation system. "Still," recalls Sharon, "It was as if Danny was in his own little cocoon."

At Chapel Court, an amazing transformation began to happen. Fellow residents accepted Danny and interacted with him, taking him under their wings. Before long, Danny became a self-appointed greeter of sorts as residents, staff, and visitors made their way through the Chapel Court lobby. Continuing his pastime of bowling, Danny became part of the Chapel Court Wii bowling team and keeps a weekly log of his scores in his pocket, always ready to share.

Danny also assumed responsibility for ensuring residents and visitors had a song book and service bulletin in hand for weekly worship and monthly memorial services. For this role, the Pastoral Care team nominated and presented Danny with a volunteer service award in 2024. Danny proudly shows off his golden St. John's

United Volunteer lanyard and name badge to those he encounters.

Danny has become a treasured presence at Chapel Court. "Hard times brought us to a good place," says Sue. "Our parents and Danny never had to be separated. Dad was able to rest assured before his death in 2017 that Danny had a special place here with special friends. It's as if Danny has emerged as this beautiful butterfly." Sharon concurs, "God opened a door here and Danny has blossomed. Our family is so thankful to St. John's." ♦



COMMEMORATIVE BRICKS

Want to leave a family legacy?

Want to honor a loved one?

Want to remember a special occasion?

For more information please visit our website.
www.stjohnsunited.org/foundation/bricks/



THE ART OF AGING GRACEFULLY:

A CONVERSATION IN MOTION

ON A BEAUTIFUL SPRING MORNING in May, a community room at St. John's United was filled with laughter, gentle movement, and vibrant conversation as Dr. Carol Penn stood before a circle of radiant elders to present "The Art of Aging Gracefully."

This was not a lecture. It was not a list of do's and don'ts. It was a celebration. It was a moment of reflection, a time of connection — and an invitation to reimagine aging not as a process of decline, but as an unfolding of wisdom, creativity, and vitality.

For many, the word "aging" conjures up a cascade of fears: of isolation, limitation, or invisibility. But in her practice as a physician, educator, and movement artist, Dr. Penn has come to see aging not as an end, but as an evolution. A masterpiece in progress.

Drawing from longevity science and the latest research on neuroplasticity, workshop participants learned how the brain retains its ability to grow, rewire, and adapt at every stage of life. Humans are not destined to fade—they are designed to flourish, especially when engaging bodies, minds, and hearts in meaningful ways.

Dr. Penn centered her presentation around three interwoven pillars:

- ② Creativity fuels imagination, curiosity, and a flexible mind.
- ② Connection strengthens emotional resilience and reduces the risk of cognitive decline.
- ② Community reminds us that we are never alone. We belong.

Drawing on her background in dance, yoga, and Qigong, Dr. Penn led participants through simple, joyful movement practices: Breathing together. Stretching. Laughing. In that shared space, movement became medicine—for the joints, yes, but also for the soul.

As the workshop drew to a close, what remained palpable was the immense reservoir of lived wisdom in the room, witnessed in the posture, in the glances, in the questions asked. A powerful reminder that voices matter at all stages of life, and perhaps even more as one ages.

The voice of wisdom has the power to guide families, shape policy, nourish communities, and remind the world of what really matters. It is a voice society needs more than



"Aging gracefully is not about perfection. It's about participation. Stay curious. Stay connected. Keep moving — in your body, your heart, and your spirit."

— Dr. Carol A. Penn

ever—not just to speak, but to be heard, honored, and amplified.

This is what makes St. John's United so extraordinary: it is a community that listens. A



community that invites its elders to lead with wisdom and grace. A place where aging is not hidden away, but embraced with dignity, vitality, and joy. Where every day, for every age there is healing meaning and purpose.

Dr. Penn closes with one of her favorite reminders: “Aging gracefully is not about perfection. It’s about participation. Stay curious. Stay connected. Keep moving—in your body, your heart, and your spirit.” ❖

Carol A. Penn, DO, MA, DABOM, FACOFP, is the Director of Tracks & Electives, Rocky Vista University Montana College of Osteopathic Medicine and serves on the St. John’s Foundation Board of Directors.



Dr. Carol A. Penn

STAY CONNECTED



ST. JOHN’S UNITED
facebook.com/stjohnsmt

WYNDSTONE
facebook.com/WyndStoneLiving

ST. JOHN’S UNITED FAMILY SERVICES
facebook.com/stjohnsmtfamilyservices

THE VISTA
facebook.com/vistaliving

THE CROSSINGS
facebook.com/thecrossingsmt

MISSION RIDGE
facebook.com/missionridgeliving

ST. JOHN’S UNITED
HOME HEALTH & HOSPICE
facebook.com/SJUHomeHealthHospice



youtube.com/StJohnsMT



VOLUNTEER
Visit www.stjohnsunitied.org/volunteer
for opportunities



SIGN UP FOR OUR E-NEWSLETTER
visit www.stjohnsunitied.org and click
“Stay Connected”



LEAVE US A REVIEW
visit www.stjohnsunitied.org/review



THE HEART

YOU BRING

Wes Windon, Raschelle Adams, and Sterling Trenary

FOR MANY PEOPLE, THE IDEA OF spending time in a hospice setting can feel intimidating. But for Sterling Trenary and Wes Windon, it has become one of the most meaningful parts of their lives. Both are volunteers at St. John's United Home Health and Hospice, offering their time and presence to patients facing the final stages of life. What they've learned, they say, is that hospice work isn't about doing, it's about being.

Sterling Trenary's journey into hospice volunteering began after volunteering with Life Enrichment at St. John's. "I was looking to develop deeper relationships with residents," recalls Sterling, who is

considering a career in medicine. When he started volunteering, he quickly realized that the most powerful moments often happen without words.

Some days, that means listening to a patient's stories. Other days, it means sitting in silence, holding a hand, or simply sharing the same space. Even silence can be connection, and Sterling notes the shift when someone realizes authentic presence. "I may have a resident who can't speak or is nonverbal, so I'll read to them. I can see in their body language that they are enjoying somebody spending time with them."

Others love to talk, and "will talk your ear off as they build a relationship," says Sterling, and he credits his youth as facilitating a relationship based on mentorship. "People have so many different experiences throughout their lives to share. I get to accept their advice and knowledge. I get to learn about all these new perspectives I never thought about before"

For hospice volunteer Wes Windon, serving people in their final months is about far more than end-of-life care—it's about connection, dignity, and joy. "It's not conceding to the end of life," he says. "It's embracing a resource that provides more care, more

sincere care, more love.”

Wes’s journey into hospice volunteering began with personal

“I can see in their body language that they are enjoying somebody being there just to spend time with them.”

– Sterling Trenary

loss. His mother passed away from Lou Gehrig’s disease at 57, and his father later died from cancer. Hospice supported both of them, and their family, through those difficult times. “I thought it was a wonderful program because they were there not only to help the patient, but also the family.”

Drawn to elders’ wisdom and stories, Wes finds joy in simply being present. “I love to visit with older people... they’ve been around the block, and they know what life’s all about. Unfortunately, I feel our society sometimes ‘throws away’ our elders. I want them to know they’re loved.”

Much of Wes’ time is spent listening—something he admits he had to learn. “I was not a very good listener before. Scripture says, ‘Be quick to listen, slow to speak,’ and that’s what I try to do.” Often he asks open-ended questions such as, What was your favorite thing to do as a kid? These spark memories that bring joy. For Wes, hospice work is life-giving, “It gives people something to look forward to... companionship, purpose, and the reminder that they are valued.”

In her role as Volunteer Coordination for St. John’s Hospice, Raschelle Adams observes these connections unfold every day. “Our volunteers are the heart of hospice,” Raschelle says. “They bring comfort, companionship, and dignity at a time when it matters most. I see the difference they make every single day.”

She acknowledges that hospice work can be emotionally challenging, but she also sees how it transforms the volunteers themselves. “The volunteers come in thinking they’re here to give,” Raschelle says, “and they walk away realizing they’ve received something just as valuable. Sterling and Wes both embody that spirit of mutual connection.”

Hospice volunteers fill a role that staff members often can’t, providing companionship without

“It’s not conceding to the end of life, it’s embracing a resource that provides more care, more sincere care, more love.”

– Wes Windon

the time constraints of medical care. For patients, that can make all the difference. “I hear from families all the time how much it means to know someone is visiting their loved one when they can’t be there,” Raschelle says. “It eases their minds and brings comfort to the patient.”

Each visit is unique. Sometimes it’s a walk outside, sometimes quiet

conversation, sometimes prayer. “Touch is important,” Wes says. “Even if someone can’t respond, I’ll hold their hand. We as human beings need to feel that.”

From Raschelle’s perspective, that willingness is all it takes to get started. “We provide the training,” Raschelle asserts. “The biggest myth is that to become a hospice volunteer, you have to sit bedside somebody who is actively dying.” But even with a terminal diagnosis, there is so much life to live. “Thriving is the key word, thriving,” says Raschelle. “We don’t look at it as you’re dying of a disease. We look at it that you’re living with this diagnosis, this disease, and we want to help you live to the fullest.” Hospice also offers other opportunities to engage are behind the scenes. “We have volunteers who grow peace lilies, help with administrative work, and plan events and parties. There is a way for everyone to be involved,” says Raschelle.

Sterling encourages young people seeking volunteer opportunities to consider hospice, “I think being younger has more advantages than people think—like the mentorship aspect. The advice that you get from the patients you work with is so valuable.”

For anyone considering hospice volunteering, Sterling and Wes agree that the work is less about having the “right” skills and more about having an open heart. “There are so many incredible things about hospice and people will surprise you,” says Sterling. “There are no expectations of you to fix anything,” says Wes, “Just be present and listen.”

PHILANTHROPISTS OF THE YEAR



Helen Eastwood



Lowell Dunlop

BUSINESS PARTNER OF THE YEAR



VOLUNTEER SPOTLIGHT

Yellowstone Electric Company

Lighting the way with joy and generosity

Bright, joyful holiday lights are a cornerstone of St. John's mission to create living opportunities within nurturing environments of hope, dignity, and love. For the past two seasons, Yellowstone Electric Company has made a significant impact on the residents of WyndStone by volunteering to create a stunning holiday light display.

After creating a beautiful display in 2023, residents expressed a wish: Could the lights remain year-round? Yellowstone Electric Company took this heartfelt request to heart. In December 2024, they graciously donated their services to install permanent lighting on the Little White Church.

Ken Hatfield, Vice President of Yellowstone Electric Company, played a key role in facilitating the project, dedicating extra hours to bring the vision to life. Now, the Little White Church can be illuminated in vibrant colors throughout the year — bright hues in December, green in March, red, white, and blue in July, and orange in October.





St. John's United

RESPIRE SUITES



CARING FOR YOUR LOVED

WHILE YOU **CARE FOR YOURSELF**

At St. John's United Respite Suites, we offer a warm, welcoming environment where adults over 65 can enjoy a private suite, personalized care, meals or snacks, and meaningful social interaction. Whether you need a few hours or a full day, we're here so caregivers can rest, recharge, or attend to life's demands.

**A senior day service providing a place
of comfort, care, and connection.**

Call (406) 655-7722

LEARN MORE
www.stjohnsunited.org





St. John's United

3940 Rimrock Road, Billings, MT 59102
406.655.5600 · stjohnsunited.org

Non-profit
organization
US Postage
PAID
Permit No. 333
Billings, MT

WAYS TO GIVE

GIVE NOW

Make an immediate, outright charitable gift using cash or other appropriate assets. This allows the donors to see the results of the gift during their lifetime.

GIVE LATER

Make a charitable gift upon death using estate tools and bequests. Giving in this manner allows the donors to retain control and use of their assets during their lifetime.

GIVE AND RECEIVE

Make a current charitable gift and receive ongoing, guaranteed income payments for a term of years or for life. The remainder provides charitable support when the payments end.

FOR MORE INFORMATION, PLEASE CONTACT OUR
OFFICE OF GIFT PLANNING AT 406.655.7783 OR [GIVING@STJOHNSUNITED.ORG](mailto:giving@stjohnsunited.org)